

pid

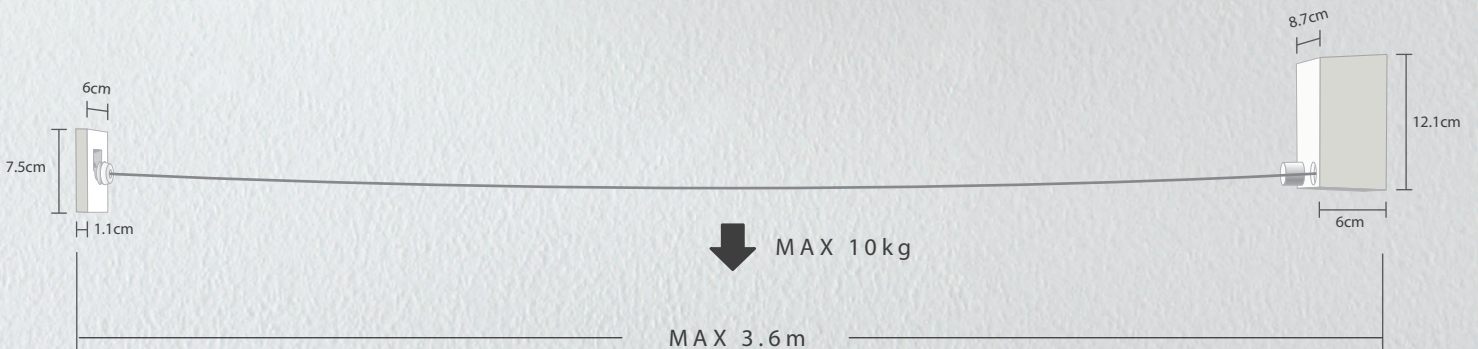
Indoor Clothes Line

室内干しはかっこいい。室内干しは楽しい。ランドリーをインテリアにするという発想。pidのある日常では室内干しが絵になります。必要なときにだけワイヤーを伸ばして使えるうれしい存在です。



Small and Medium Enterprise Agency
Director's Award for Good Design

A clothes line for only when you need it.





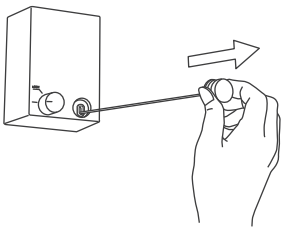
Redesigning indoor laundry

pid - A retractable indoor clothes line designed with functionality, convenience and subtlety in mind.

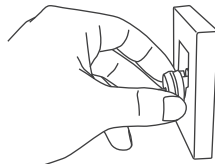
pid features clever functionality, simple operation and only a modest impact on your interior design scheme. Special attention was given to **pid**'s usability and external presence in a room: the feel of the unit, the feel of the operation, and the interior presence both when extended and when retracted.

Usage

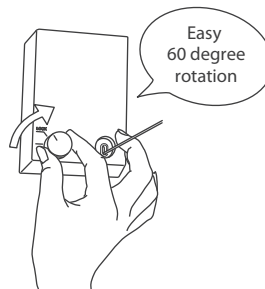
1 Pull the wire tab out from the unit



2 Fit the wire tab to the opposing hook plate



3 Turn the lock knob to secure the wire in place



Weight Capacity

pid has a weight capacity of 10kg of spun-dry laundry.

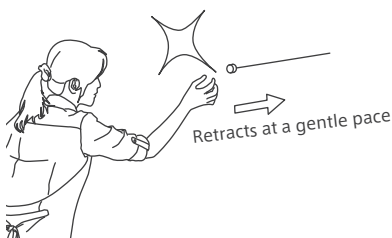
This is the equivalent of:

- 5 Long Sleeve Shirts
- 5 T-Shirts
- 2 Pairs of Jeans
- 3 Bath Towels
- 3 Sweat Shirts
- 2 Skirts

Total Weight: approx. 10kgs

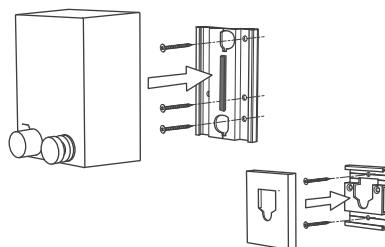
Spun-dry laundry weighs approximately 1.5 times its dry weight.

Safety Features



To prevent potential injury, **pid** comes fitted with a carefully weighted dampening mechanism. If the wire is accidentally released, it is retracted into the unit at a gentle and safe pace.

Installation



pid is easy to install on finished and unfinished walls, and can also be relocated if necessary. Simply affix the aluminium base plates to a wooden stud, beam or concrete wall foundation, and mount the components on to the plates.

⚠ Precautions

- Do not apply strong pressure to the wire, or hang more than 10 kgs of clothing. This may cause damage to the unit, or to the wall surface.
- Do not disengage the wire lock while the wire has clothing hanging on it.
- To prevent accidental contact with the extended wire, ensure that it is retracted when not in use.
- Do not expose the unit to water, or hang damp items from the unit body.
- Do not place heater units underneath hanging clothes.
- Do not attempt to dismantle or modify the unit.
- Do not use this product for purposes for which it was not intended.



Morita Aluminum Industry, inc.

MADE IN JAPAN